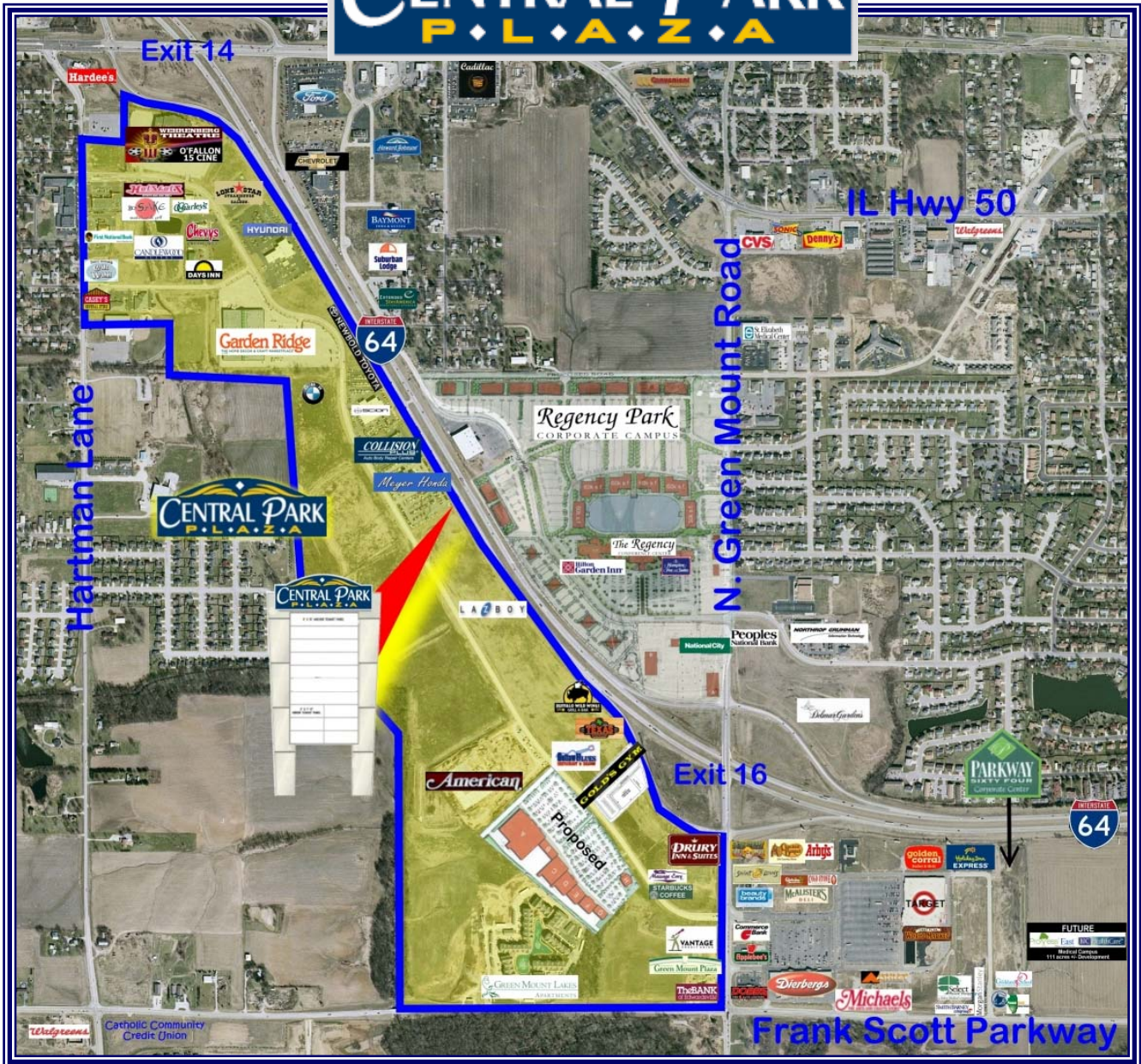
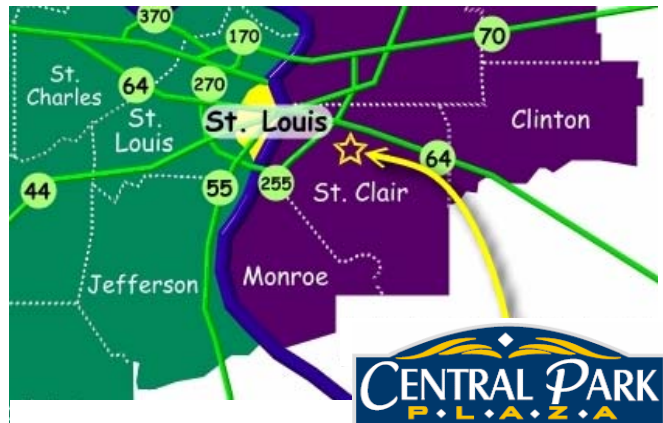


CENTRAL PARK P.L.A.Z.A.



Central Park Plaza is a 300 acre mixed use development located only 14 miles east of downtown St. Louis in O'Fallon, Illinois. O'Fallon is an integral part of the St. Louis MSA, it's the fastest growing community in St. Clair County.

FOR MORE INFORMATION, CONTACT
DARWIN M. MILES
MILES PROPERTIES INC.
 618-236-7777
 1331 Park Plaza Drive, Suite # 5
 O'Fallon, IL 62269
www.milesproperties.net



CENTRAL PARK P.L.A.Z.A.

Southwestern Illinois' Premier Development

Central Park Plaza

O'Fallon, IL

** View further at www.centralparkplaza.com **

UNDER CONTRACT

Lot 9B – on Park Plaza Drive Restaurant/Retail/Office site	1.67 acres +/-	\$6.00 psf
Lot 10C – on Park Plaza Drive Restaurant/Office site	.77 acres +/-	\$6.00 psf
Lot 16 – on Park Plaza Drive Retail site / Office site	1.54 acres +/-	\$6.00 psf
Lot 22B – on Central Park Drive Frontage on Central Park Drive, south of Garden Ridge	7.00 acres +/-	\$6.00 psf
Lot 22C – on Central Park Drive Frontage on Central Park Drive, south of Garden Ridge	10.41 acres +/- Can be Subdivided	\$6.00 psf
Lot 23A – on Central Park Circle	1.40 acres +/-	\$12.50 psf
Lot 23B – on Central Park Circle Frontage on I-64	1.78 acres +/-	\$12.50 psf
Lot 23D – on Central Park Circle	1.33 acres +/-	\$12.50 psf
Lot 24 – on Central Park Drive	27.82 acres +/- Can be Subdivided	\$7.00 psf
Lot 25C – on Central Park Drive Frontage on Central Park Drive and I-64	2.66 acres +/-	\$12.50 psf
Lot 25D – on Central Park Drive Frontage on Central Park Drive and I-64	1.94 acres +/-	\$12.50 psf
Lot 26 – on Central Park Drive Located in Southern Part of Central Park Plaza near Interchange	18.96 acres +/- Can be Subdivided	\$9.00 psf
Lot 27B – on Central Park Drive Located next to the Drury Inn & Suites site	1.68 acres +/-	\$75,000 per yr. Ground Lease
Lot 29A – on Central Park Drive Northern corner of N. Green Mount Road and Central Park Drive	1.84 acres +/-	\$120,000 per yr. Ground Lease

UNDER CONTRACT

All prices are subject to change without notice.