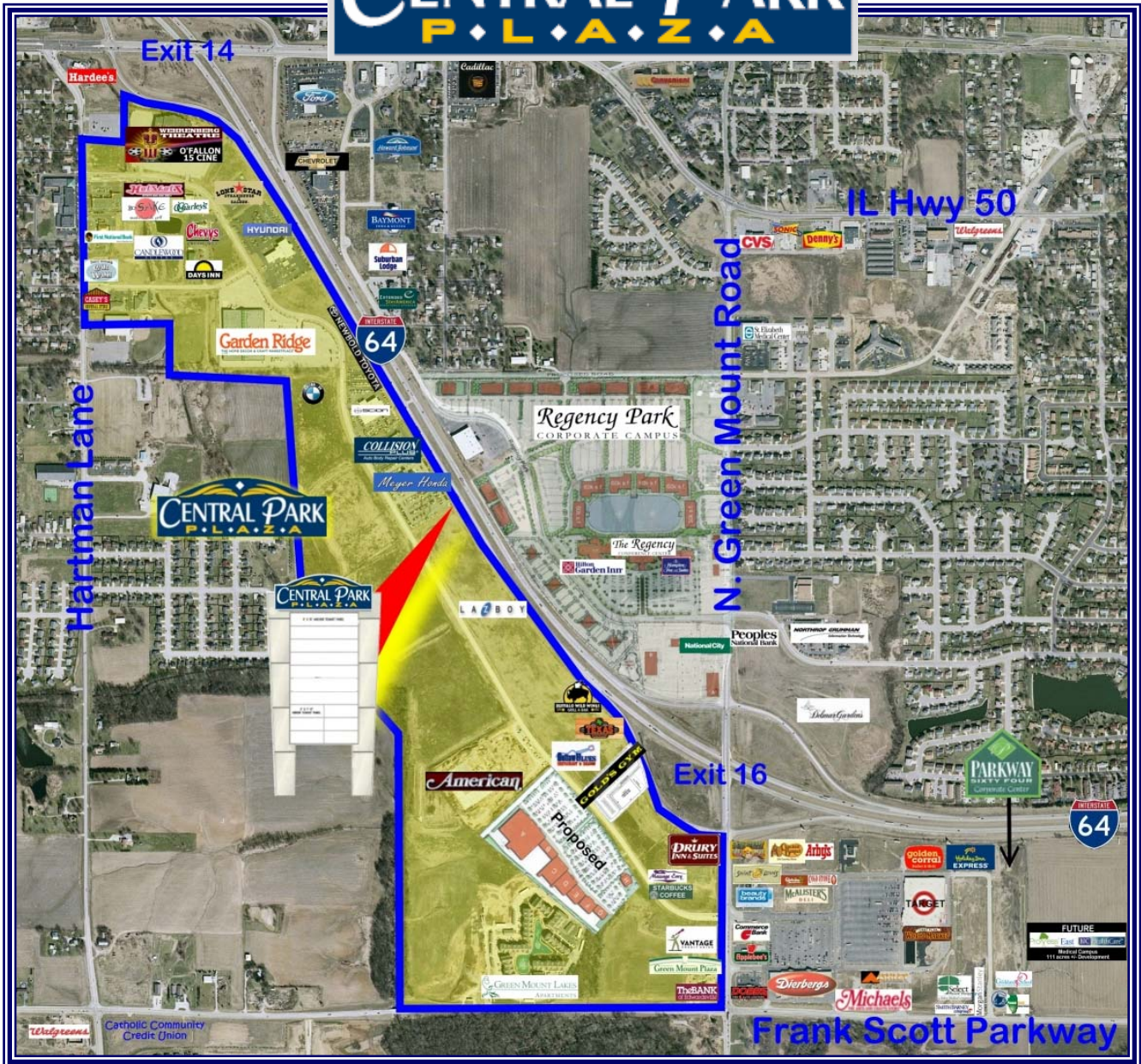
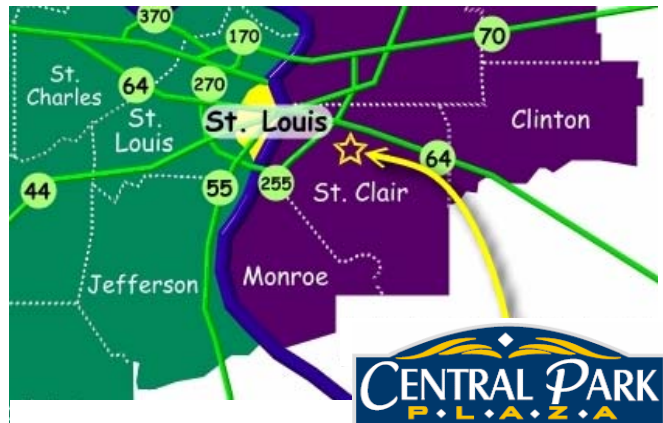


CENTRAL PARK P.L.A.Z.A.



Central Park Plaza is a 300 acre mixed use development located only 14 miles east of downtown St. Louis in O'Fallon, Illinois. O'Fallon is an integral part of the St. Louis MSA, it's the fastest growing community in St. Clair County.

FOR MORE INFORMATION, CONTACT
DARWIN M. MILES
MILES PROPERTIES INC.
 618-236-7777
 1331 Park Plaza Drive, Suite # 5
 O'Fallon, IL 62269
www.milesproperties.net



CENTRAL PARK P.L.A.Z.A.